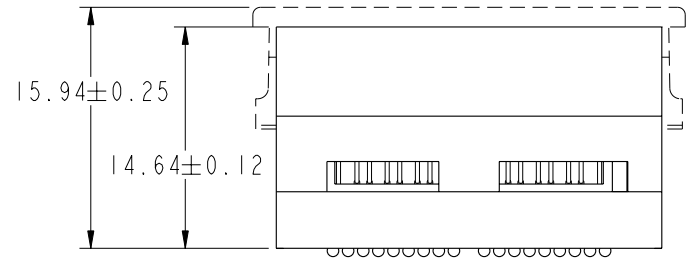
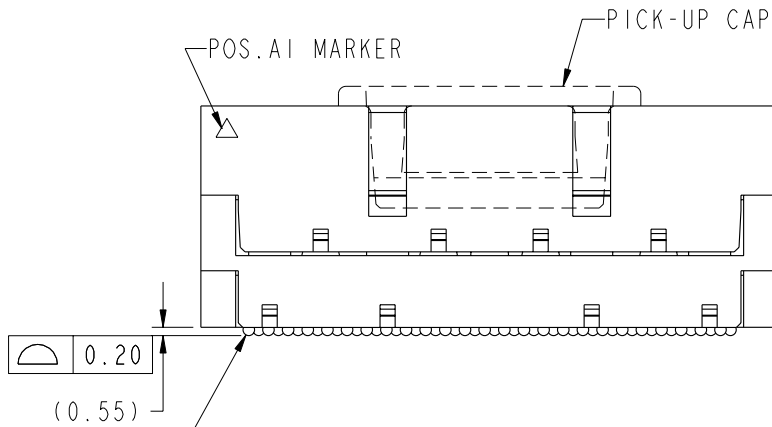
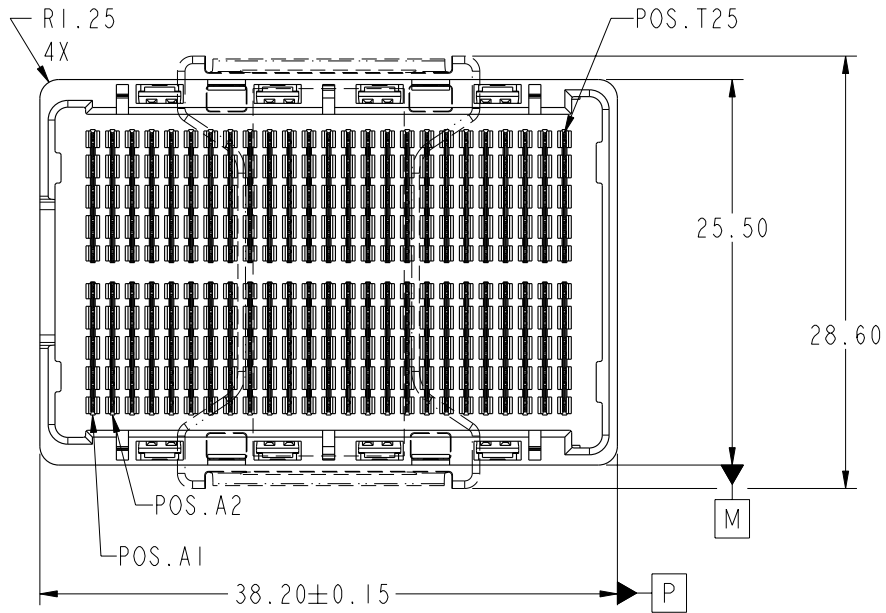




This document is the property of and embodies CONFIDENTIAL and PROPRIETARY information of FCI. No part of the information shown on this document may be used in any way or disclosed to others without the written consent of FCI. Copyright FCI.



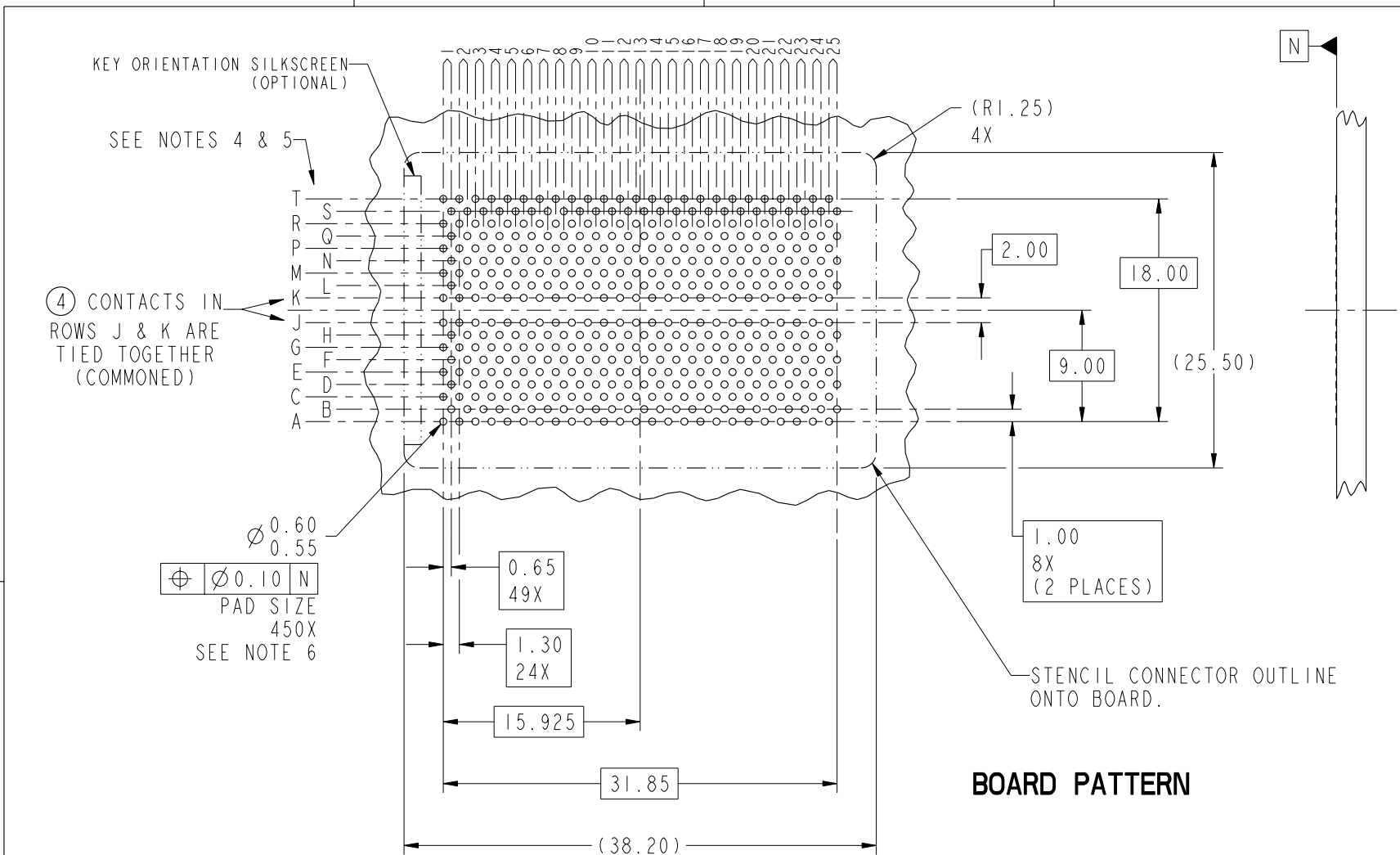
Ø0.76 SOLDER BALLS

⊕	Ø0.30	P	M
---	-------	---	---

 450X
 SEE NOTE 2

mat'l code				SEE NOTE 1		tolerances unless otherwise specified		CUSTOMER		www.fciconnect.com	
ltr	ecn no.	dr	date	linear	0.X ±0.3		COPY			title	
A	V06-0240	DAI	03/20/06		0.XX ±0.10		projection			GIG-Array	
B	V06-0558	LP	2006/06/12	angles	0.XXX ±0.050					15mm PLUG ASSY. 200 SIG. POS.	
					0° ±2°		MM			product family	
				dr	R. JOHNSON	11/14/01	scale		GIG-Array		code
				engr	D. JOHNESCU	11/14/01	1:1		size		213
				chr	D. JOHNESCU	11/14/01			dwg no		sheet
				appd	D. JOHNESCU	11/14/01			A		1 of 4
sheet index		revision sheet	B 1	B 2	B 3	B 4			cage code		4

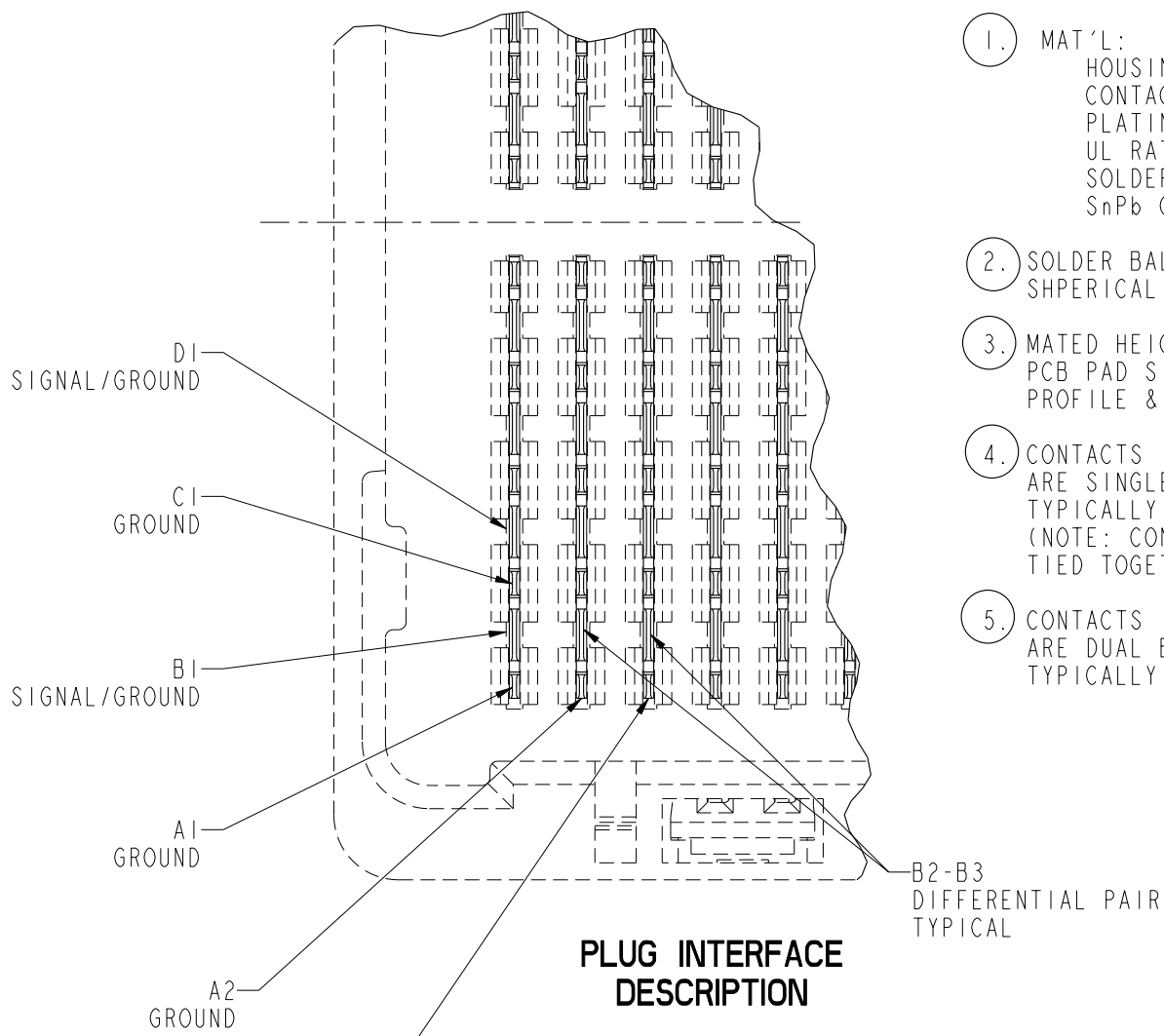
This document is the property of and embodies CONFIDENTIAL and PROPRIETARY information of FCJ. No part of the information shown on this document may be used in any way or disclosed to others without the written consent of FCJ. Copyright FCJ.



$\varnothing 0.60$
 $\varnothing 0.55$
 $\varnothing 0.10$ N
 PAD SIZE
 450X
 SEE NOTE 6

BOARD PATTERN

mat'l code				SEE NOTE 1		tolerances unless otherwise specified		CUSTOMER		www.fcjconnect.com	
ltr	ecr no.	dr	date	linear	0.X ±0.3		COPY			title	
B	-	-	-		0.XX ±0.10		MM			GIG-Array	
					0.XXX ±0.050		←			15mm PLUG ASSY. 200 SIG. POS.	
				angles	0° ±2°		scale		product family		
				dr	R. JOHNSON	11/14/01	2:1		GIG-Array		
				enr	D. JOHNESCU	11/14/01			code		
				chr	D. JOHNESCU	11/14/01			size		
				appd	D. JOHNESCU	11/14/01			dwg no		
sheet index		revision sheet						A		55738	
										213	
										sheet	
										2	



NOTES:

1. MAT'L:
HOUSING: LCP
CONTACT: COPPER ALLOY
PLATING (CONTACT): Au OVER Ni.
UL RATING: 94 V-0
SOLDER BALL: (SEE TABLE) EUTECTIC
SnPb OR LEAD FREE 95.5 Sn/4Ag/0.5Cu.
2. SOLDER BALLS WILL NOT BE PERFECT SHPERICAL SHAPE DUE TO REFLOW ATTACHMENT.
3. MATED HEIGHT EFFECTED BY CUSTOMERS' PCB PAD SIZE, PLATING, SOLDER REFLOW PROFILE & SOLDER PASTE.
4. CONTACTS IN ROWS A,C,E,G,J,K,M,P,R AND T ARE SINGLE BEAM CONTACTS, TYPICALLY USED AS GROUND PINS. (NOTE: CONTACTS IN ROWS J & K ARE TIED TOGETHER [COMMONED])
5. CONTACTS IN ROWS B,D,F,H,L,N,Q AND S ARE DUAL BEAM CONTACTS, TYPICALLY USED AS SIGNAL PINS.



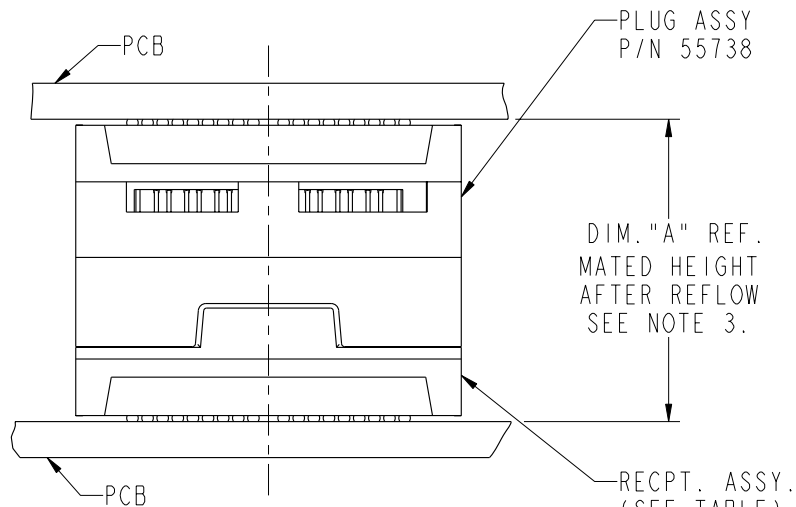
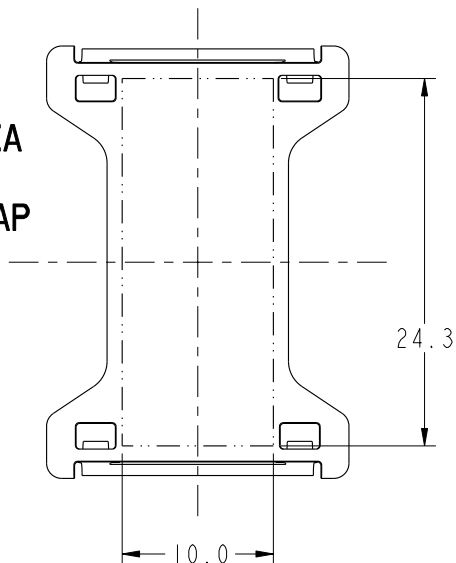
This document is the property of and embodies CONFIDENTIAL and PROPRIETARY information of FCI. No part of the information shown on this document may be used in any way or disclosed to others without the written consent of FCI. Copyright FCI.

PLUG INTERFACE DESCRIPTION

mat'l code				SEE NOTE 1		tolerances unless otherwise specified		CUSTOMER		FCI www.fciconnect.com	
ltr	ecn no.	dr	date	linear	0.X ±0.3		COPY		projection	title	
B	-	-	-		0.XX ±0.10		MM			GIG-Array	
					0.XXX ±0.050		7:1			15mm PLUG ASSY. 200 SIG. POS.	
				angles	0° ±2°		scale		product family		
				dr	R. JOHNSON	11/14/01			GIG-Array		
				enr	D. JOHNESCU	11/14/01			code		
				chr	D. JOHNESCU	11/14/01			213		
				appd	D. JOHNESCU	11/14/01			sheet		
sheet index		revision sheet						size		3	
								dwg no		55738	
								A		3	

PRODUCT NUMBER	SOLDER BALL
55738-001	SnPb
55738-001LF	SnAgCu LEADFREE 7 8

FLAT AREA FOR PICK-UP CAP



END VIEW OF MATED CONNECTORS

DIM. "A"	RECPT. ASSY. P/N
20	55740
25	10026010
30	55741

6. SPECIFIED POSITIONAL TOLERANCE DEFINES PAD TO PAD LOCATION WITHIN LAND PATTERN. POSITIONAL TOLERANCE OF LAND PATTERN TO FUDICIAL MARKS OR PCB DATUMS SHALL BE DEFINED BY CUSTOMER. FOR RECOMMENDED PRODUCT APPLICATION AND PCB DESIGN DETAILS, SEE DOC. NO. GS-20-016.

7. FOR PROPER APPLICATION FOLLOW FCI APPLICATION SPECIFICATION GS-20-033. LEAD FREE SOLDER BALLS WILL NOT SOLDER PROPERLY IN A LEADED SOLDER PROCESS DUE TO A HIGHER REFLOW TEMPERATURE. LEADFREE PRODUCT IS THEREFORE NOT BACKWARDS COMPATIBLE WITH LEADED OR SOME SOLDERING APPLICATIONS. REFERENCE FCI APPLICATION SPECIFICATION.

8. THIS PRODUCT MEETS THE EUROPEAN UNION DIRECTIVES AND OTHER COUNTRY REGULATIONS AS DESCRIBED IN GS-22-008. PRODUCT MEETING THIS DIRECTIVE IS IDENTIFIED IN THE CODE NUMBER MARKED ON EACH PART BY HAVING AN "X" IN THE SEVENTH CHARACTER POSITION.

mat'l code				SEE NOTE 1		tolerances unless otherwise specified		CUSTOMER		FCI www.fciconnect.com	
ltr	ecr no.	dr	date	linear	0.X ±0.3		COPY		projection	title	
B	-	-	-		0.XX ±0.10		GIG-Array			15mm PLUG ASSY. 200 SIG. POS.	
					0.XXX ±0.050		GIG-Array			code	
				angles	0° ±2°		MM		scale	product family	
					dr R. JOHNSON 11/14/01		← MM →			size	
					enrg D. JOHNESCU 11/14/01		1:1			dwg no	
					chr D. JOHNESCU 11/14/01		A			55738	
					appd D. JOHNESCU 11/14/01				sheet		
sheet index		revision sheet								4	



This document is the property of and embodies CONFIDENTIAL and PROPRIETARY information of FCI. No part of the information shown on this document may be used in any way or disclosed to others without the written consent of FCI. Copyright FCI.